

# An exclusive offer for you from trusted partners

Practiceplan and Attenborough Dental Laboratories have combined forces again to provide you with a fantastic offer to help you save money and deliver the highest aesthetics for your patients.

The offer is available exclusively to **practiceplan** dentists and is just the beginning of a series of amazing offers from Attenborough Dental Laboratories in partnership with CAD-CAM products.

## Exclusive practiceplan Offer

CAD-CAM Product	Normal Price	practiceplan Price
Composite	£60-70	<b>£32.99</b>
Titanium Bonded	£80-100 <small>(inc. precious metal, depending on weight)</small>	<b>£42.50</b>
Alumina	£120-130	<b>£47.56</b>
Zirconia	£135-£145	<b>£49.99</b>
Zircon	£150-£180	<b>£93.87</b>

### Other benefits included in the package:

#### Track your orders online

Log on to [www.attenborough.com](http://www.attenborough.com) and track the progress of your cases. Information is updated in real-time by their technicians, logging production data on touch screens throughout their labs.

You can also confirm the expected despatch date, search for specific cases, add standing instructions to your account for the processing of all your cases, check your account balance and print out statements, view and print estimates for cases in progress, check and update your account details, view and print out invoices for despatched cases and print out lab prescriptions and shipping labels direct.

To apply for an on-line account, please call Attenborough Dental Laboratories or e-mail [info@attenborough.com](mailto:info@attenborough.com)

#### Door-to-door collection and delivery

Call **01159 473 562** before 10.30 am for a same-day collection, direct from your practice, anywhere in the UK. All cases may be tracked online and bar-coded labels printed at [www.attenborough.com](http://www.attenborough.com) - no more walking to the post office! **Please note** that there is a nominal charge of £8.90 for collection and delivery, however, up to six cases can be sent in one shipment, which results in a fee of less than £1.50 per case.

If you would like to begin saving with our exclusive offer or would like to speak to a member of the Attenborough Dental Laboratories team, please call **01159 473 562** or email [info@attenborough.com](mailto:info@attenborough.com)

  
**practiceplan**



All restorations manufactured entirely in the UK

In April 2000, Attenborough Dental Laboratories were the first UK laboratory to launch an in-house CAD-CAM service for the manufacture of highly aesthetic crown and bridgework.

Today, some eight years and over 40,000 restorations later, practiceplan are delighted to offer exclusively CAD-CAM restorations using the new and unsurpassed release of the Dentform software suite - one of the most powerful on the market today. The latest revision includes diagnostic wax-up and wax bite scanning, full anatomical CAD of complex restorations and advanced integrated precision attachment design and manufacture.

## Indications

### ■ Composite

Temporary restorations, provisional implant restorations, definitives where in occlusion with ceramic restorations, crowns and large span bridges, inlays, onlays.

### ■ Titanium Bonded

All indications where a precious metal bonded restoration would normally be prescribed, including implant restorations - advantages are much lighter than precious metal and stronger so the framework can be thinner, x-ray translucent, completely biocompatible with implant components (no galvanic effect, conductivity minimises thermal sensitivity).

### ■ Alumina

Highly aesthetic all-ceramic normal and implant restorations, crowns, up to three unit anterior bridges, inlays and onlays.

### ■ Zirconia

Highly aesthetic all-ceramic normal and implant restorations, up to four unit posterior bridges, inlays, onlays and 30% stronger than alumina.

### ■ Zircon

Highly aesthetic all-ceramic normal and implant restorations, crowns and up to full arch bridges, inlays and onlays.

Other systems mill so-called 'green state' zircon, because it is softer and therefore easier and quicker to mill, plus less demanding on the milling tools. The disadvantage is that the coping or framework shrinks significantly during firing, which can adversely affect fit.

Although Attenborough Dental Laboratories can mill from green-state zircon, they prefer to mill from hard state pre-sintered zircon. Their's is the only system strong enough to do this.

If you would like to begin saving with our exclusive offer or would like to speak to a member of the Attenborough Dental Laboratories team, please call 01159 473 562 or email [info@attenborough.com](mailto:info@attenborough.com)

  
**practiceplan**  
Kempthorne House, Park Avenue  
Oswestry, Shropshire SY11 1AY  
T: 01691 684120  
F: 01691 684149  
E: [info@practiceplan.co.uk](mailto:info@practiceplan.co.uk)  
W: [www.practiceplan.co.uk](http://www.practiceplan.co.uk)



**Attenborough Dental Labs Ltd**  
Viscosa House, George Street  
Nottingham NG1 3BN  
T: 01159 473 562  
F: 01159 509 086  
E: [info@attenborough.com](mailto:info@attenborough.com)  
W: [www.attenborough.com](http://www.attenborough.com)

### Terms and Conditions

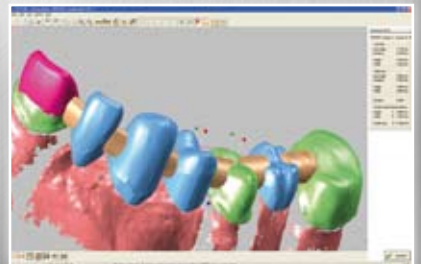
Offer valid until 31.03.09 • Call 01159 453562 before 10.30 am for a same-day collection from your practice, anywhere in the UK • Door to door courier service available for a nominal £8.90 fee, with up to six cases fitting in one shipment, that's less than £1.50 per case • Four day turnaround as standard (work back to practice within four working days) • Five-year guarantee on all work (remake cover 100% Year 1, 80% Year 2, 60% Year 3, 40% Year 4, 20% Year 5) • All work traceable online at every stage from collection, through manufacture to delivery, log on to [www.attenborough.com](http://www.attenborough.com) for more info • As with all CAD-CAM work, your preparation should have a full circumferential shoulder margin of at least 0.6mm • Avoid highly angular preparations with sharp edges • Preparations should allow for a restorative dimension of 0.6mm, both occlusally and at the margin • Not suitable for knife edge / marginless preparations • Because of the accuracy of the CAD-CAM process, remakes account for less than 0.5% of all cases manufactured. In the highly unlikely event of requiring a remake this will always be free of charge, except where there is an inaccuracy in the original recording • Price includes casting and articulating up to 2 models, further models will be charged at £5 each.

## Perfection...



### ...in precision

As part of the manufacturing process Attenborough optically scan your models and dies to a resolution of 10 micron, producing crowns and large bridges that have excellent strength and fit.



### ...in design

Attenborough's technicians design the coping or framework using some of the most powerful 3-D CAD-CAM software available, being capable of simply, reliably and quickly fabricating multiple bridge frameworks.



### ...in fabrication

The CAM system is also one of the most flexible on the market, manufacturing restorations from a wide variety of materials including composites, bonded titanium, Vita InCeram Alumina and Zirconia all-ceramic, and the extremely strong Zircon (zirconium oxide).



### ...in aesthetics

Highly aesthetic premier private quality crown and bridgework is now exclusively available to practiceplan clinicians at a fraction of the normal price by using Attenborough's advanced manufacturing facility.